



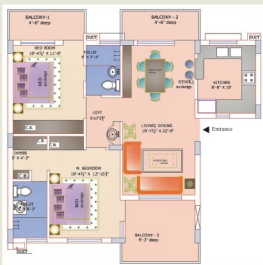
A value proposition you will cherish for

the lifetime.

a value proposition you will cherish for the lifetime.



READY FOR POSSESSION



TWO BEDROOM
APARTMENT 1260 sq ft



THREE BEDROOM
APARTMENT - TYPE B 1880 sq ft

PRICING DETAILS

Apartment	Area (Sq. Ft.)	Price (INR)	Car Parking*	Club Membership*	Total (INR)
2 Bedrooms	1260**	25,21,000/-	70,000	30,000	26,21,000/-
3 Bedrooms	1880**	37,61,000/-	70,000	30,000	38,61,000/-

*One Time Charges

As per the company policies, all the prices mentioned above are subject to change without any prior notice.

** PLC Charges as follows :

1st Floor: 4% Extra, 2nd Floor: 3% Extra, 3rd Floor: 2% Extra
4th, 5th and 6th Floors: At Par

PAYMENT PLAN

Booking Amount	10%
Within 30 days (Incl. booking amount)	30%
Within 60 days	30%
Within 90 days (On Possession)	30%



GBM DEVELOPERS & PROMOTERS PVT. LTD.

Site Office: Off. No. 4-5-6, Shiva Enclave, Chd - Ropar Road, Kharar,

Greater Mohali (Pb.) | Tel.: +91.160.5091603 - 605

Corp. Office: SCO 348-349, 2nd Floor, Sector 34-A, Chandigarh

Tel.: +91.172.4616663, 4678880

Email: gmbapartments@gmail.com Website: www.gbmindia.com

For queries, call:

9216 44 22 33, 9216 333 666